

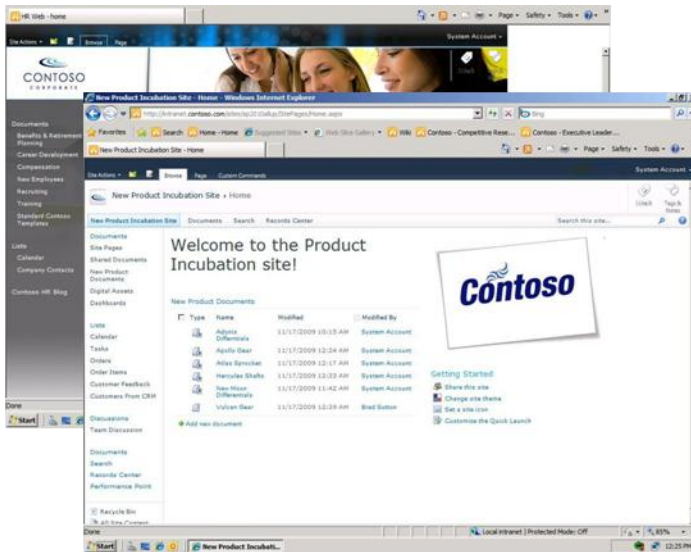


SharePoint 2010 Sites: A Single Infrastructure for All Your Business Web Sites

Think of Microsoft® SharePoint® 2010 Sites as a “one-stop shop” for all your business Web sites. It provides a full set of tools that your people can use to create any kind of site, plus a single infrastructure that simplifies site management. From a team site for colleagues, to an extranet site for partners, to an Internet site for customers, people can share and publish information using one familiar system.

SharePoint Ribbon lets you focus on your work, not your software

With the new SharePoint Ribbon, you can quickly and easily find the features you want. Simple point-and-click functionality makes complex tasks easier and helps you work and explore with confidence.



SharePoint 2010 Sites powers enterprise portals and team sites.

Easily Share and Publish Information

SharePoint sites are easy to make. In fact, the full set of features in SharePoint 2010 Sites can help anyone build a site from start to finish. Several out-of-the-box features provide instant value by helping a site owner build the first page right away. Still other features make it simple to modify pages—change content, add interaction, or apply a design theme. Novice or expert, anyone can quickly create, customize, and publish a site that looks great and meets a specific business need.

Out-of-the-Box Web Parts reduce ramp time

SharePoint 2010 Sites offers a suite of powerful, out-of-the-box Web Parts that give you access to a wide array of information and applications. With SharePoint 2010 Sites, you can easily add or remove Web Parts with just a few clicks.



The SharePoint Ribbon gives you easy access to the features you need.

Business Connectivity Services unlocks enterprise data

SharePoint 2010 features Business Connectivity Services (BCS), giving you full read and write capabilities in business systems. BCS-based applications can work with Microsoft Word, Microsoft Outlook®, Microsoft InfoPath®, and Microsoft SharePoint Workspace. SharePoint 2010 virtual lists let you work with line-of-business data directly in the SharePoint user interface.

Unified infrastructure and centralized tools save time and effort for IT

SharePoint 2010 is built on a single, cohesive infrastructure that easily scales across intranets, extranets, and the Internet. It includes a full complement of management tools and reports, a developer dashboard to monitor performance of pages, monitoring and alerts-based logs and events, and a Web analytics service.

On-premises or hosted solutions provide flexibility

SharePoint 2010 solutions can be deployed on-premises or hosted in the cloud through Microsoft Business Productivity Online Services.

Deliver Personalized Experiences

SharePoint 2010 Sites gives people the content they need, the way they want it. Features such as audience targeting, multilingual interface support, and user tagging provide a highly customized Web experience.

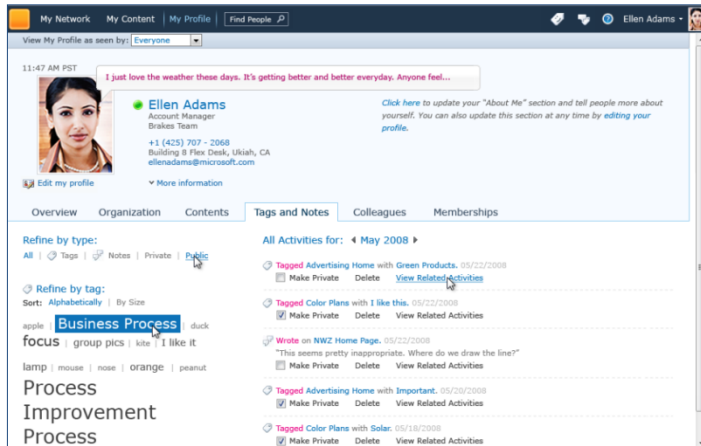
Audience targeting delivers the right information to the right people

With rules-based audience targeting in SharePoint 2010, content owners can deliver information to specific audiences across multiple sites within a single deployment. This means that almost any item within a portal can be targeted to any group of users.



Tagging exposes relevant information

In SharePoint 2010, you can apply tags to content using existing taxonomies or create new tags that help others find content. By subscribing to tags, you can receive updates on content, people, projects, and much more, directly within your personal My Site.



Tag clouds and My Sites allow people to share and discover information.

My Sites give you control of what you share

With My Sites in SharePoint 2010, you can build a personal profile that acts as an access point to frequently used systems and tools.

Multilingual control involves everyone

SharePoint 2010 supports multilingual users and scenarios, helping global companies and their people work together, regardless of location or language. SharePoint 2010 provides users with multilingual support of critical site components, including site headings and menus to make it easier for all employees to benefit from SharePoint sites.

Ensure Broad Adoption

SharePoint sites are as easy to use as they are to make. That's because SharePoint 2010 Sites works so well with other technologies that people use to do their jobs. Connections to Microsoft Office make it a snap to save documents directly to SharePoint sites. Even offline, people can access sites, documents, and lists with Microsoft SharePoint Workspace and synchronize changes just by reconnecting. Plus, cross-browser support and a great mobile experience mean that anyone can access and share content, in the office or on the go.

Connections to Microsoft Office increase productivity

With SharePoint, you can open, edit, and save documents just as you do with Microsoft Office. Use Office Web Applications to view and edit Microsoft Word, Microsoft Excel®, Microsoft PowerPoint®, and Microsoft OneNote® documents over the Internet without losing formatting.

Mobile connectivity makes it easy to work on the go

SharePoint 2010 enhances the mobile experience. Along with the native client for Microsoft Windows Mobile® devices, SharePoint 2010 now supports a wider variety of today's micro-browsers and includes a mobile software development kit (SDK) that you can use to customize mobile experiences.

SharePoint Workspace lets you take your work with you

Microsoft SharePoint 2010 Workspace helps you take individual libraries or entire sites offline, make changes, and easily synchronize edits to host servers. What's more, if you have low bandwidth, you can use the new variance transmission, where only the changes you make are joined with parent copies.

Broad browser support meets everyone's needs

SharePoint 2010 supports many browsers, including Microsoft Internet Explorer® 8, Internet Explorer 7, Firefox, and Safari.

For More Information

Learn more about SharePoint 2010 Sites at <http://sharepoint.microsoft.com>.

This document is for informational purposes only. MICROSOFT MAKES NO WARRANTIES, EXPRESS OR IMPLIED, IN THIS SUMMARY.

The example companies, organizations, products, domain names, e-mail addresses, logos, people, places, and events depicted herein are fictitious. No association with any real company, organization, product, domain name, e-mail address, logo, person, place, or event is intended or should be inferred.

© 2010 Microsoft Corporation. All rights reserved. Microsoft, Excel, InfoPath, Internet Explorer, OneNote, Outlook, PowerPoint, SharePoint, and Windows Mobile are trademarks of the Microsoft group of companies. All other trademarks are property of their respective owners.



Microsoft®
SharePoint® 2010

